

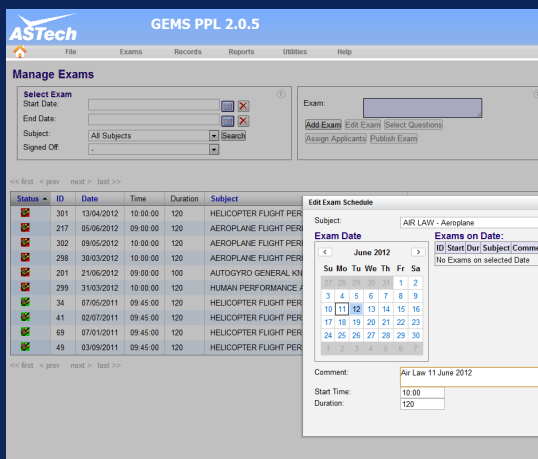
Key Features

- AUTOMATES THE MANAGING OF LICENCE EXAMINATIONS—FROM LICENCE APPLICATION TO ISSUE RESULT LETTERS
- EASY MANAGEMENT OF STUDENT RESULTS AND EXAMINATION PAPERS
- EASY BROWSING AND EDITING OF QUESTIONS
- GENERATES STATISTICAL ANALYSES OF RESULTS
- AUTOMATED CORRECTION OF EXAM PAPERS USING OMR

Gems PPL—Home Page



Gems PPL - Manage Exams



GEMS PPL

GEMS PPL is a web application which automates the management of private pilot licencing examinations. A single installation of GEMS PPL can manage examinations for both aeroplane and helicopter examinations.

GEMS PPL generates multiple choice exam papers with randomly chosen questions in accordance with the EASA syllabi for pilot licencing. Automatic correction of exams can be provided with use of the ASTech GEMS OMR product, and exam grading is carried out by GEMS PPL.

With GEMS PPL it is possible to manage all steps of a student's progress, from application to successful completion of all the required examinations for a pilot's licence. Student records are retained.

Functionality

All functions in GEMS PPL are accessed through an intuitive web interface. Some of the features of GEMS PPL are:

- Web application hosted on customer's corporate intranet
- Compatible with GEMS OMR for automatic correction of exams
- Automatic grading of exams
- Ability to produce question papers and answer sheets for students, and correct answer sheets and examiner copies of the question paper for examiners
- Extensive analysis and reporting features, including:
 - ◆ Exam Item Analysis
 - ◆ Subject Analysis
 - ◆ Flight School Analysis

Typical Operations

The following are some typical operations in GEMS PPL:

Adding Applicants

Applicants may be added to the GEMS PPL Database at any time. GEMS PPL allows you to store the following details about exam applicants:

- Their personal details (date of birth, gender, postal address)
- Their licencing number
- Their flight school

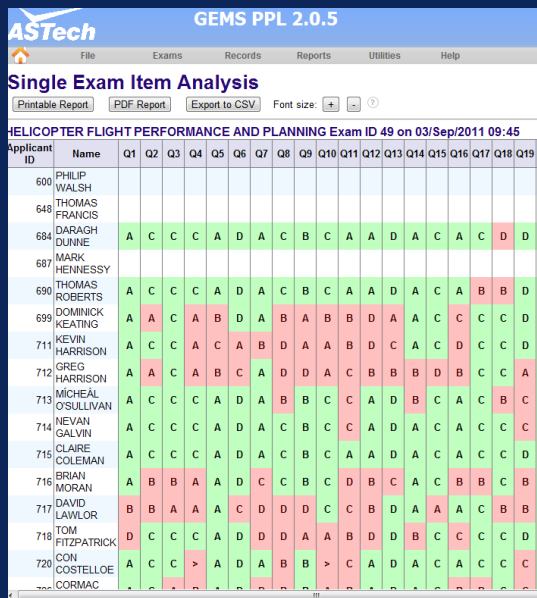
Generating Exams

A number of different examination papers are created when an exam is published. These are:

- Student Question Paper
- Student Answer Sheet (An answer sheet in a form which may be used with the GEMS OMR product for automatic correction of papers)
- Correct Answer Sheet for the examiner's use
- Examiner question paper, which contains not only the questions, but also indicates the correct answer and the appropriate weighting to apply to each question



Gems PPL - Single Exam Analysis



Applicant ID	Name	Q1	Q2	Q3	Q4	Q5	Q6	Q7	Q8	Q9	Q10	Q11	Q12	Q13	Q14	Q15	Q16	Q17	Q18	Q19
600	PHILIP WALSH																			
648	THOMAS FRANCOIS																			
684	DARAGH DUNNE	A	C	C	C	A	D	A	C	B	C	A	A	D	A	C	A	C	D	D
687	MARK HENNESSY																			
690	THOMAS ROBERTS	A	C	C	C	A	D	A	C	B	C	A	A	D	A	C	A	B	B	D
699	DOMINICK KEATING	A	A	C	A	B	D	A	B	A	B	B	D	A	A	C	C	C	C	D
711	KEVIN HARRISON	A	C	C	A	C	A	B	D	A	A	B	D	C	A	C	D	C	C	D
712	GREG HARRISON	A	A	C	A	B	C	A	D	D	A	C	B	B	D	B	C	C	C	A
713	MICHAEL O'SULLIVAN	A	C	C	C	A	D	A	B	B	C	C	A	D	B	C	A	C	B	C
714	NEVAN GALVIN	A	C	C	C	A	D	A	C	B	C	C	A	D	A	C	A	C	C	C
715	CLAIRE COLEMAN	A	C	C	C	A	D	A	C	B	C	A	A	D	A	C	A	C	C	D
716	BRIAN MCRAE	A	B	B	A	A	D	C	C	B	C	D	B	C	A	C	B	B	C	B
717	DAVID LAWLOR	B	B	A	A	A	C	D	D	D	C	C	B	D	A	A	C	B	B	B
718	TOM FITZPATRICK	D	C	C	C	A	D	D	D	A	A	B	D	D	B	C	C	C	C	D
720	CON COSTELLOE	A	C	C	>	A	D	A	B	B	>	C	A	D	A	C	A	C	C	C
720	CORMAC																			

Generating Results Letters

GEMS PPL can automatically produce letters to applicants advising them of their results in each sitting of an exam. The percentage result and status (pass/fail) is shown for each subject. The exact format of the result letters can be customised by ASTech.

Generating Reports

GEMS PPL can generate a range of statistical reports on candidate and examination performance, including:

- Single Applicant Report
- Single Exam Analysis
- Exam Item Analysis
- Subject Analysis
- Flight School Analysis

Benefits of GEMS PPL

GEMS PPL offers an end-to-end management system for Private Pilot Licence examinations. Once students have been added to the system, they can be added to exams, their papers can be automatically corrected (using the additional GEMS OMR module) and their results can be graded. GEMS PPL automates the issuing of information letters to students, informing them of their results.

Questions are automatically generated and marked according to EASA regulations.

ASTech in the Aviation Industry

Atlantic Simulation & Training Technologies (ASTech) is an internationally trading software company based in Galway, Ireland. The company specializes in products and services for the development and delivery of training and examination systems for industry. Customers within the aviation industry include Lufthansa Technical Training, SR Technics, Embraer, TAP Portugal, Lufthansa Resource Technical Training, Cargolux, Shannon Aerospace, including.

Other products include GEMS Basic, GEMS Type, GEMS Fundamentals, GEMS OMR, GEMS Online Exam, GEMS Pilot Type and GEMS FCL.

Functionality Overview

